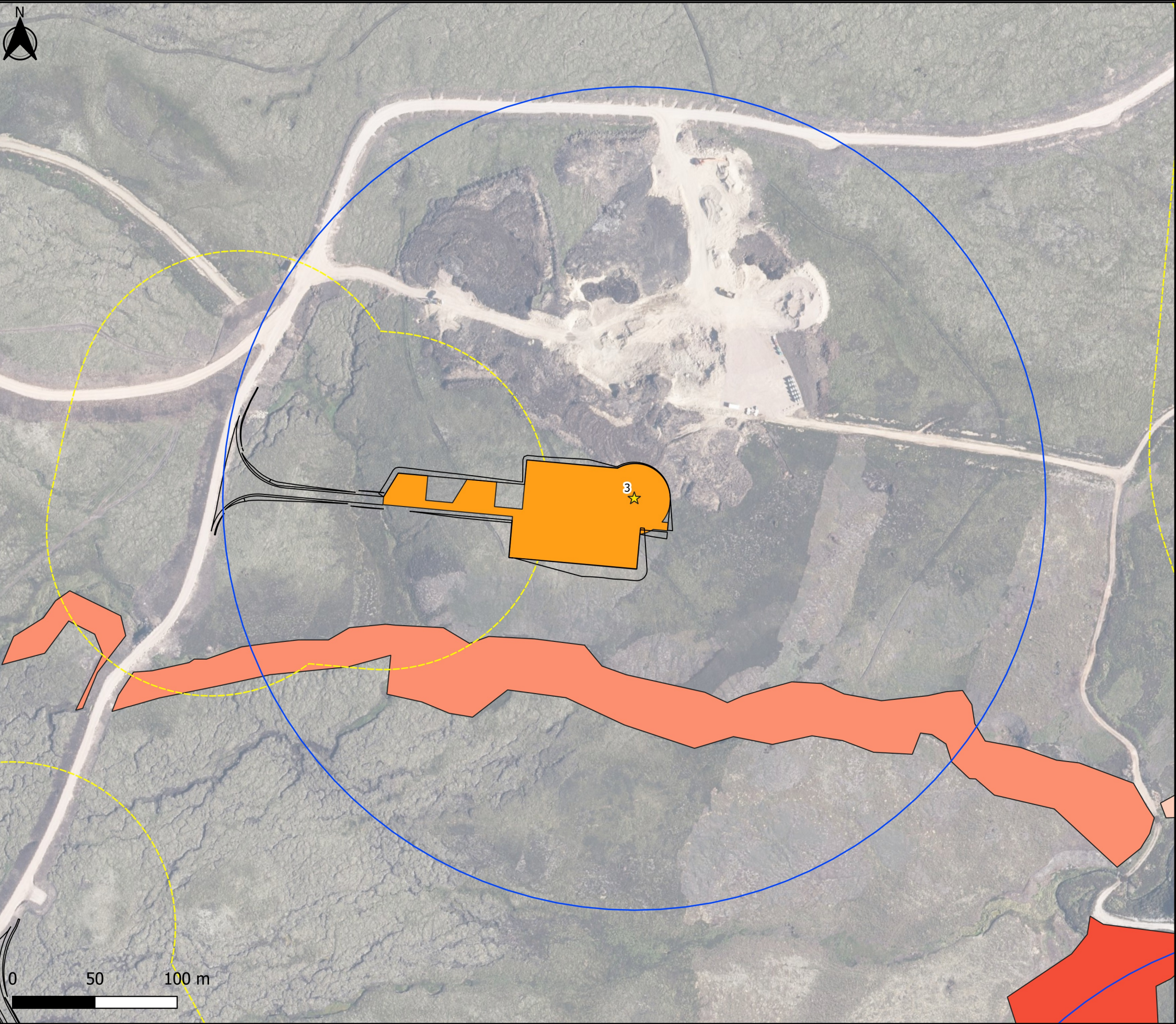


Figure 11.6 Potential impacts on GWDTEs



LEGEND

- Proposed Development Site Boundary
- Proposed Turbine Locations
- Access Track and Earthworks
- 250m from Turbine Location
- Crane Pads
- 100m from Access Track

M6c mire and acid flush habitat (potentially highly groundwater dependent):

- Cover of M6c mire and acid flush habitat (10-25%)
- Cover of M6c mire and acid flush habitat (25-50%)
- Cover of M6c mire and acid flush habitat (25-50%)

**Title**

Potential impacts on

**Project**

Tom na Clach

**Sources**

BSG Ecology | Aerial Photography © Bing, Microsoft Bing Maps screen shot reprinted with permission from Microsoft Corporation.

Date	Page - Scale	Drawn
10/03/2022	1:2,400	SL

INFINERGY