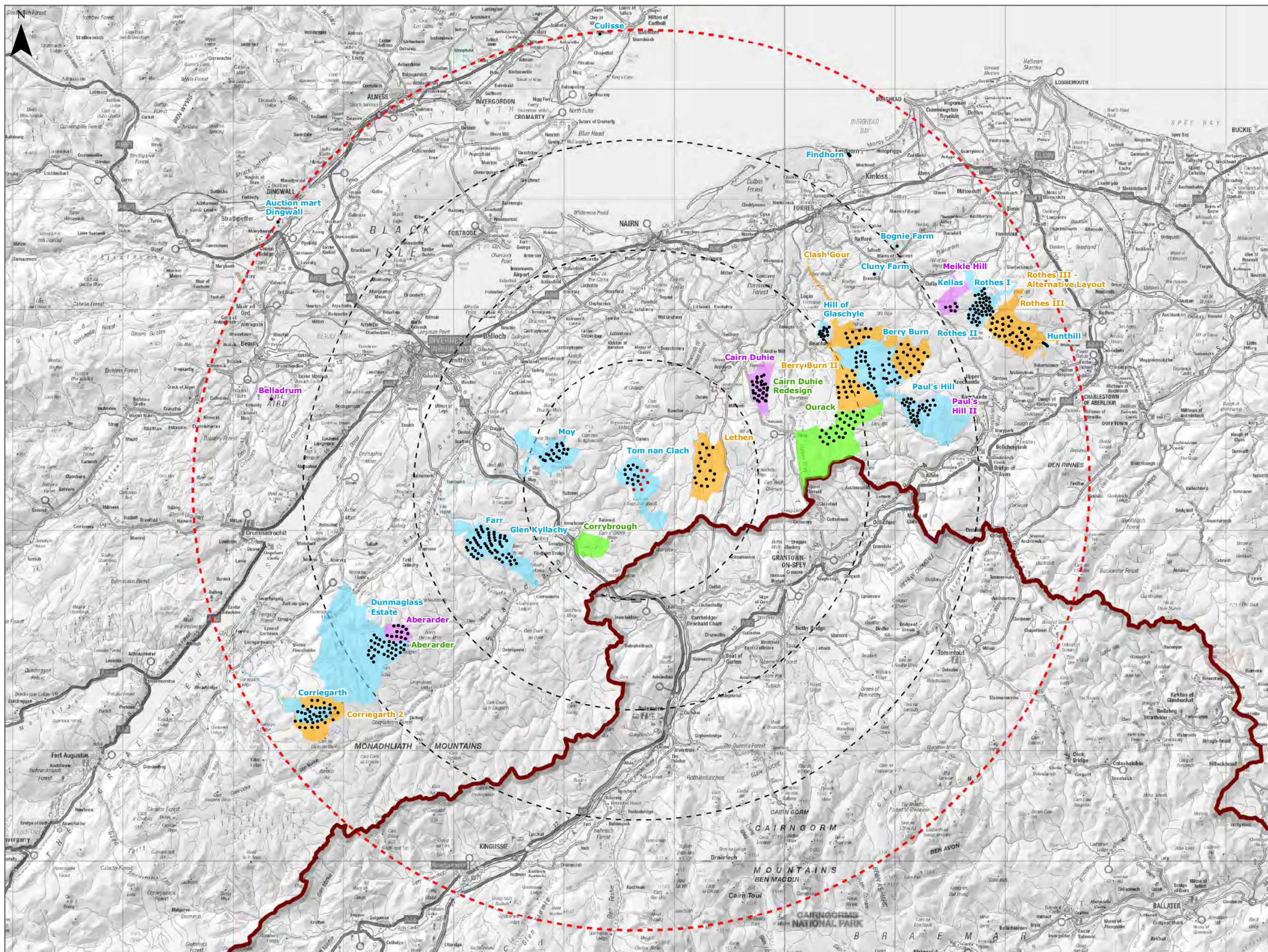


Figure 9.12 Cumulative Wind Farms



Legend:

- Proposed Turbine
- 10km Radii
- 40km LVIA Study Area
- ▭ Cairngorms National Park

Wind Development Status:

- Operational / Under Construction
- Consented
- Application
- Scoping

Title: Cumulative Wind Farms	
Source: Contains OS data © Crown copyright and database right (2021). Contains public sector information licensed under the Open Government Licence v3.0.	
Client: Infinergy	
Drawn by: JM	Checked: JP
Date: 03/01/2022	Figure: 9.12
Scale: 0 2.5 5 km	Revision No: 1

INFINERGY