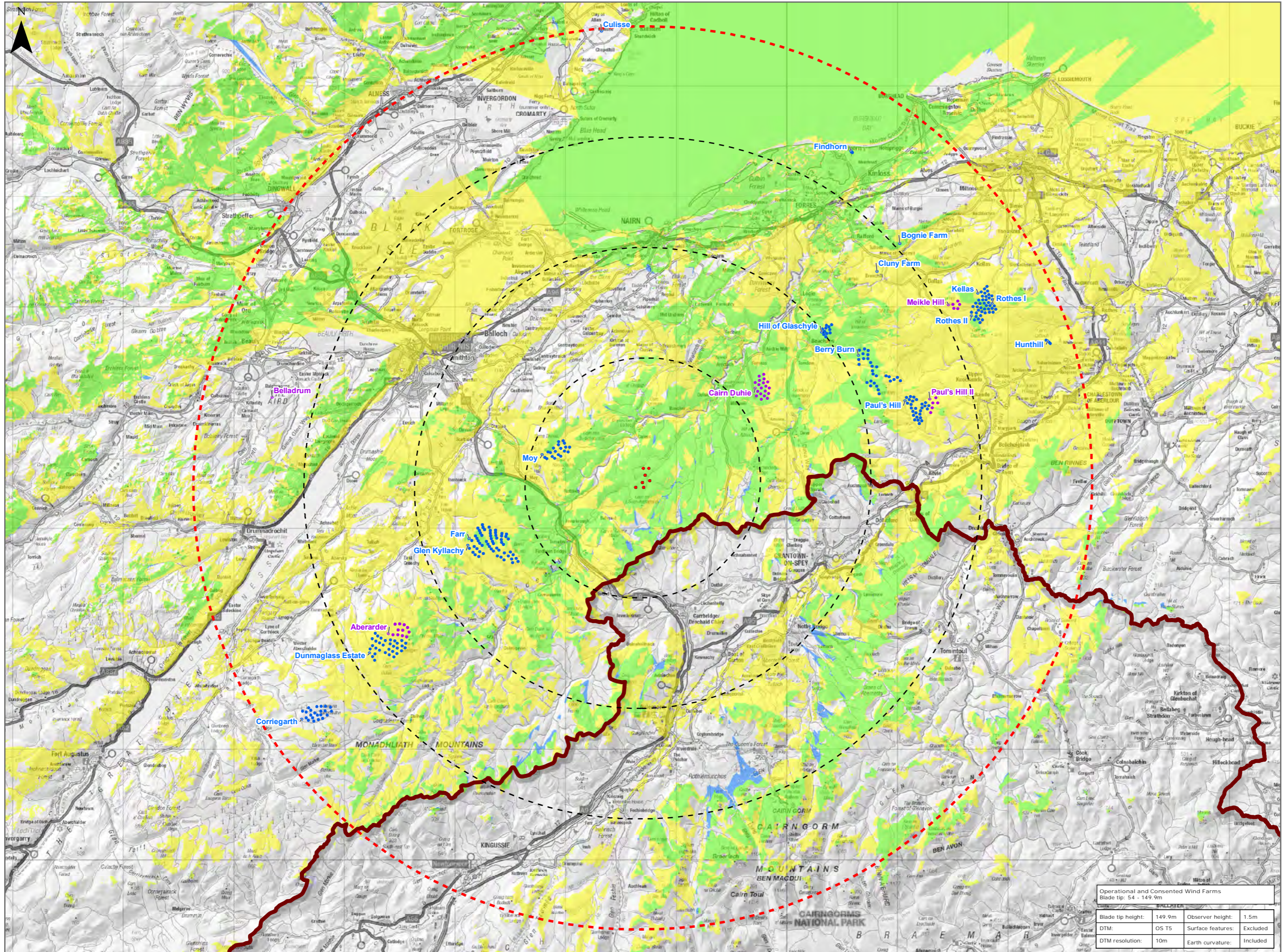


Figure 9.14 Cumulative ZTV with all operational and consented Wind Farms



Legend:

- Proposed Turbine
- 10km Radii
- 40km LVIA Study Area
- Cairngorms National Park

Wind Farm Status

- Operational / Under Construction
- Consented

Cumulative ZTV

- Tom na Clach Extension Theoretical Visibility
- Operational and Consented Wind Farms Theoretical Visibility
- Combined Theoretical Visibility

Title:  
Cumulative ZTV with all operational and consented Wind Farms

Tom na Clach  
Wind Farm Extension

Source: Contains OS data © Crown copyright and database right (2021). © Crown copyright. All rights reserved (2021).  
Ordnance Survey Licence 0100031673. Contains public sector information licensed under the Open Government Licence v3.0

Client: Infinergy

Drawn by: JM      Checked: JP

Date: 03/01/2022      Figure: 9.14

Scale: 0 2.5 5 km      Revision No: 1

Operational and Consented Wind Farms			
Blade tip: 54 - 149.9m			
Blade tip height:	149.9m	Observer height:	1.5m
DTM:	OS T5	Surface features:	Excluded
DTM resolution:	10m	Earth curvature:	Included