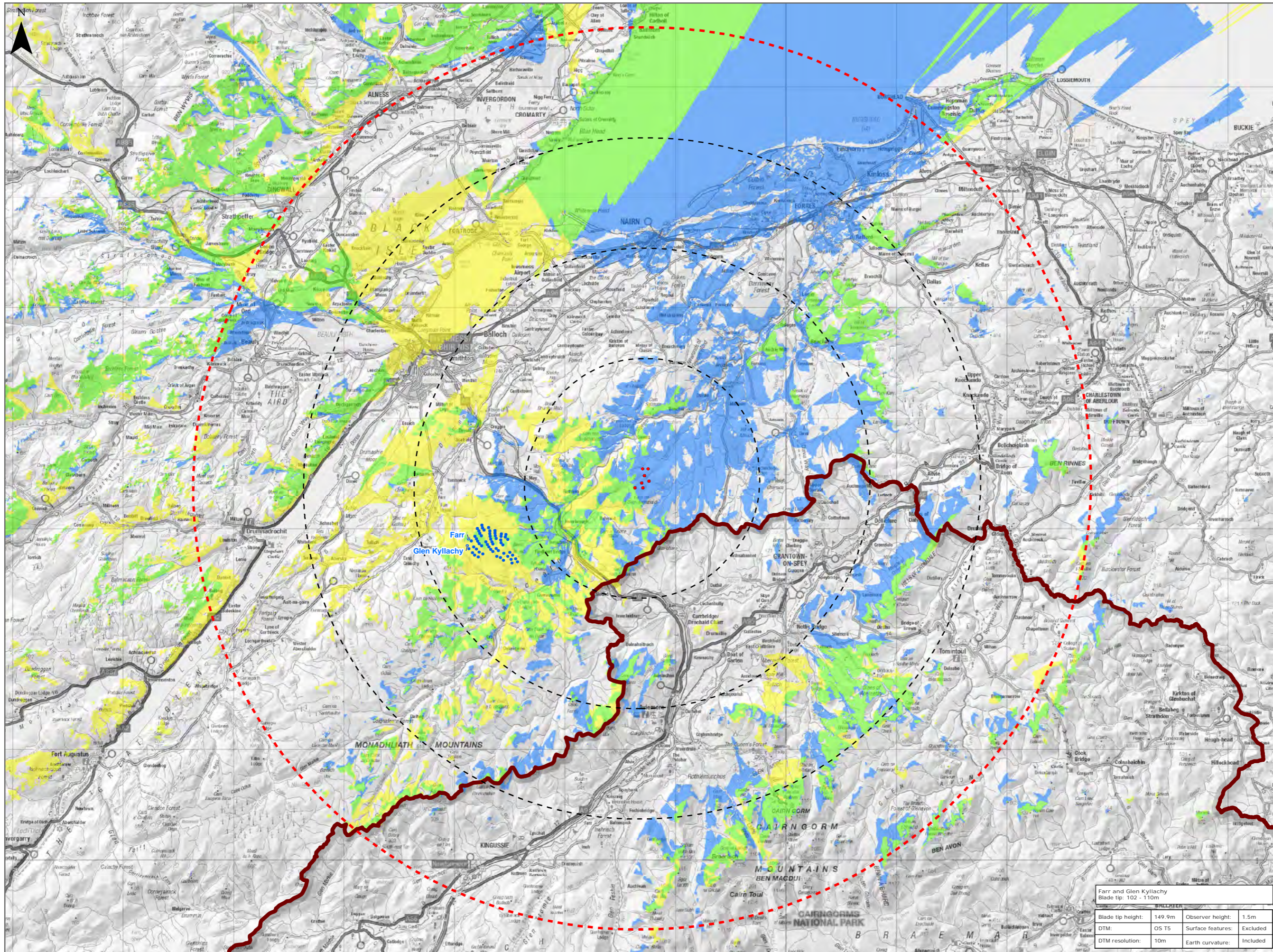


Figure 9.16 Cumulative ZTV with operational Farr and Glen Kyllachy



Legend:

- Proposed Turbine
- 10km Radii
- 40km LVIA Study Area
- Cairngorms National Park

Wind Farm Status

- Operational / Under Construction

Cumulative ZTV

- Tom na Clach Extension Theoretical Visibility
- Farr and Glen Kyllachy Theoretical Visibility
- Combined Theoretical Visibility

Title:
Cumulative ZTV with operational Farr and Glen Kyllachy

Tom na Clach Wind Farm Extension

Source: Contains OS data © Crown copyright and database right (2021). © Crown copyright. All rights reserved (2021). Ordnance Survey Licence 0100031673. Contains public sector information licensed under the Open Government Licence v3.0

Client: Infinergy

Drawn by: JM	Checked: JP
--------------	-------------

Date: 03/01/2022	Figure: 9.16
------------------	--------------

Scale: 0 2.5 5 km	Revision No: 1
-------------------	----------------

Farr and Glen Kyllachy Blade tip: 102 - 110m			
Blade tip height:	149.9m	Observer height:	1.5m
DTM:	OS T5	Surface features:	Excluded
DTM resolution:	10m	Earth curvature:	Included