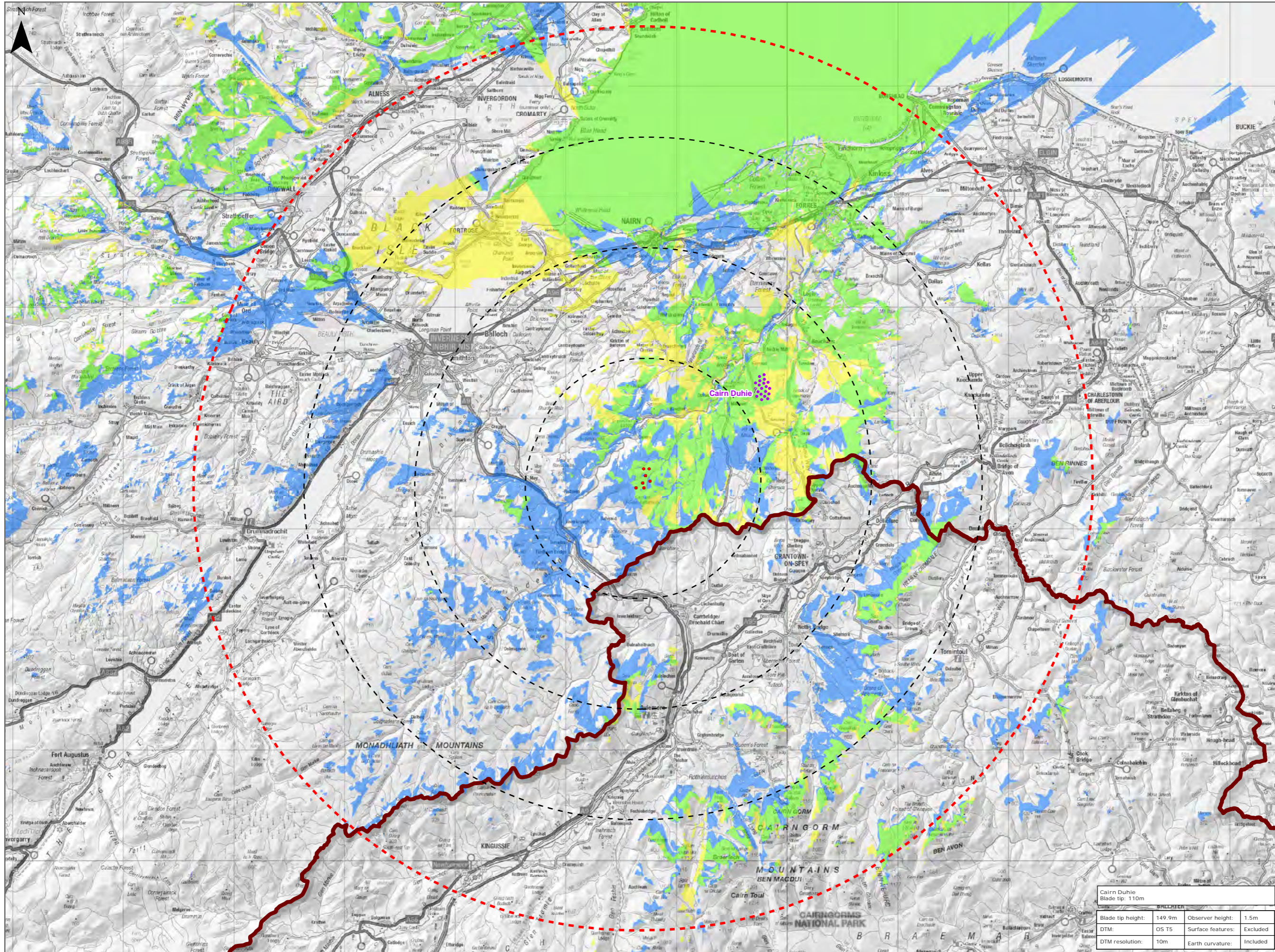


Figure 9.19 Cumulative ZTV with consented Cairn Duhie



Legend:

- Proposed Turbine
- 10km Radii
- 40km LVIA Study Area
- ▭ Cairngorms National Park

Wind Farm Status

- Consented

Cumulative ZTV

- Tom na Clach Extension Theoretical Visibility
- Cairn Duhie Theoretical Visibility
- Combined Theoretical Visibility

Title:
Cumulative ZTV with consented Cairn Duhie

Tom na Clach
Wind Farm Extension

Source: Contains OS data © Crown copyright and database right (2021). © Crown copyright. All rights reserved (2021).
Ordnance Survey Licence 0100031673. Contains public sector information licensed under the Open Government Licence v3.0

Client: Infinergy

Drawn by: JM	Checked: JP
-----------------	----------------

Date: 03/01/2022	Figure: 9.19
---------------------	-----------------

Scale: 0 2.5 5 km	Revision No: 1
-------------------------	-------------------

Cairn Duhie Blade tip: 110m			
Blade tip height:	149.9m	Observer height:	1.5m
DTM:	OS T5	Surface features:	Excluded
DTM resolution:	10m	Earth curvature:	Included