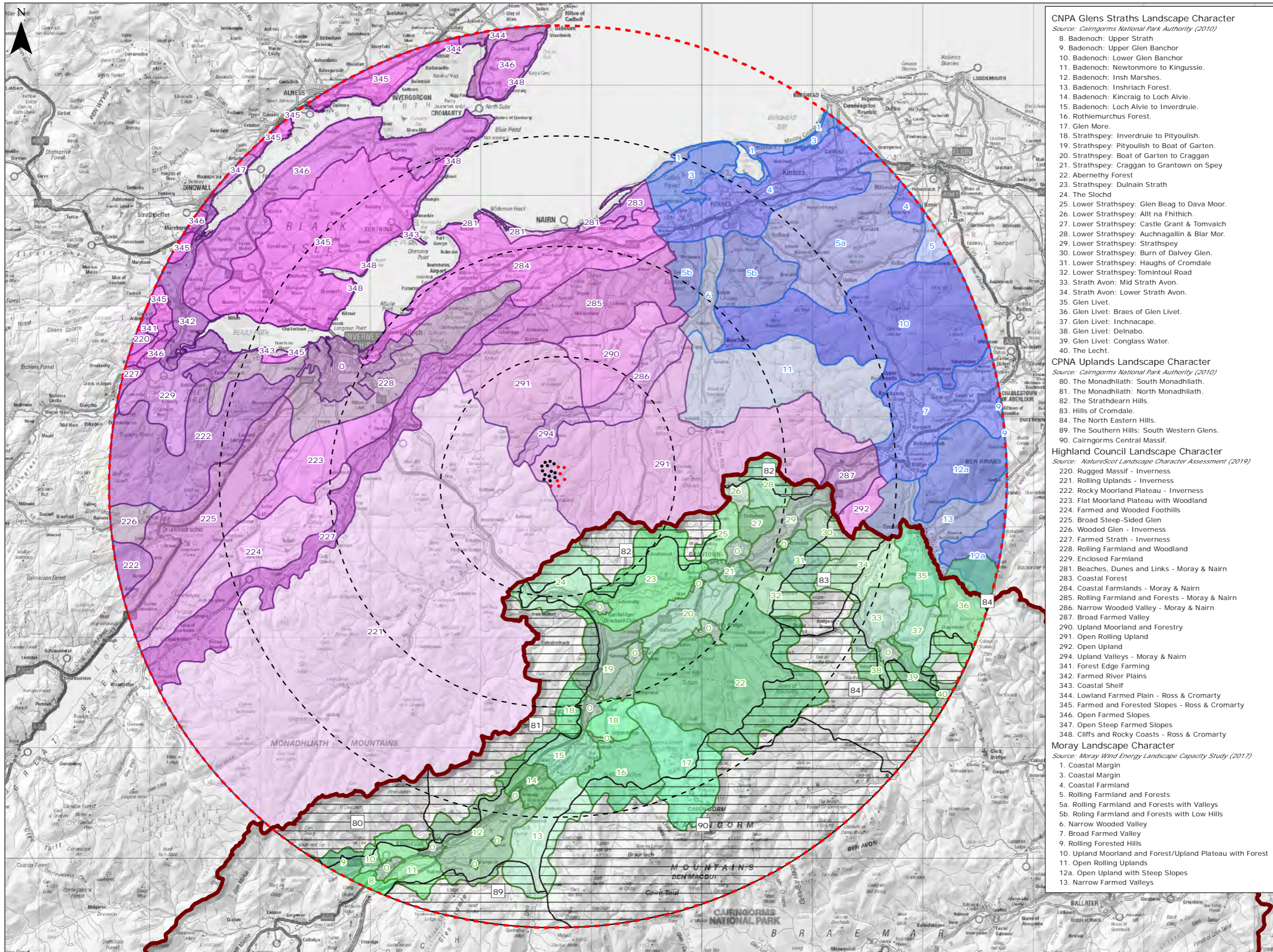


Figure 9.2 Landscape Character



- CNPA Glens Straths Landscape Character**
 Source: Cairngorms National Park Authority (2010)
- Badenoch: Upper Strath
 - Badenoch: Upper Glen Banchor
 - Badenoch: Lower Glen Banchor
 - Badenoch: Newtonmore to Kingussie.
 - Badenoch: Insh Marshes.
 - Badenoch: Inshriach Forest.
 - Badenoch: Kincaig to Loch Alvie.
 - Badenoch: Loch Alvie to Inverdrue.
 - Rothiemurchus Forest.
 - Glen More.
 - Strathspey: Inverdrue to Pityoulish.
 - Strathspey: Pityoulish to Boat of Garten.
 - Strathspey: Boat of Garten to Craggan
 - Strathspey: Craggan to Grantown on Spey
 - Abernethy Forest
 - Strathspey: Duinain Strath
 - The Slochd
 - Lower Strathspey: Glen Beag to Dava Moor.
 - Lower Strathspey: Allt na Fhithich.
 - Lower Strathspey: Castle Grant & Tomvaich
 - Lower Strathspey: Auchnagallin & Blar Mor.
 - Lower Strathspey: Strathspey
 - Lower Strathspey: Burn of Dalveg Glen.
 - Lower Strathspey: Haughs of Cromdale
 - Lower Strathspey: Tomintoul Road
 - Strath Avon: Mid Strath Avon.
 - Strath Avon: Lower Strath Avon.
 - Glen Livet.
 - Glen Livet: Braes of Glen Livet.
 - Glen Livet: Inchnacape.
 - Glen Livet: Delnabo.
 - Glen Livet: Conglass Water.
 - The Lecht.
- CPNA Uplands Landscape Character**
 Source: Cairngorms National Park Authority (2010)
- The Monadhliath: South Monadhliath.
 - The Monadhliath: North Monadhliath.
 - The Strathdearn Hills.
 - Hills of Cromdale.
 - The North Eastern Hills.
 - The Southern Hills: South Western Glens.
 - Cairngorms Central Massif.
- Highland Council Landscape Character**
 Source: NatureScot Landscape Character Assessment (2019)
- Rugged Massif - Inverness
 - Rolling Uplands - Inverness
 - Rocky Moorland Plateau - Inverness
 - Flat Moorland Plateau with Woodland
 - Farmed and Wooded Foothills
 - Broad Steep-Sided Glen
 - Wooded Glen - Inverness
 - Farmed Strath - Inverness
 - Rolling Farmland and Woodland
 - Enclosed Farmland
 - Upland Moorland and Forestry
 - Open Rolling Upland
 - Open Upland
 - Upland Valleys - Moray & Nairn
 - Forest Edge Farming
 - Farmed River Plains
 - Coastal Shelf
 - Lowland Farmed Plain - Ross & Cromarty
 - Farmed and Forested Slopes - Ross & Cromarty
 - Open Farmed Slopes
 - Open Steep Farmed Slopes
 - Cliffs and Rocky Coasts - Ross & Cromarty
- Moray Landscape Character**
 Source: Moray Wind Energy Landscape Capacity Study (2017)
- Coastal Margin
 - Coastal Margin
 - Coastal Farmland
 - Rolling Farmland and Forests
 - Rolling Farmland and Forests with Valleys
 - Rolling Farmland and Forests with Low Hills
 - Narrow Wooded Valley
 - Broad Farmed Valley
 - Rolling Forested Hills
 - Upland Moorland and Forest/Upland Plateau with Forest
 - Open Rolling Uplands
 - Open Upland with Steep Slopes
 - Narrow Farmed Valleys

- Legend:**
- Operational Tom nan Clach Turbine
 - Proposed Turbine
 - 10km Radii
 - 40km LVIA Study Area
 - CNPA Glens & Straths Landscape Character
 - CPNA Uplands Landscape Character
 - Highland Council Landscape Character
 - Moray Council Landscape Character
 - Cairngorms National Park

Title: Landscape Character	
Tom na Clach Wind Farm Extension	
Source: Contains OS data © Crown copyright and database right (2021). Contains public sector information licensed under the Open Government Licence v3.0.	
Client: Infinergy	
Drawn by: JM	Checked: JP
Date: 03/01/2022	Figure: 9.2
Scale: 0 2.5 5 km	Revision No: 1