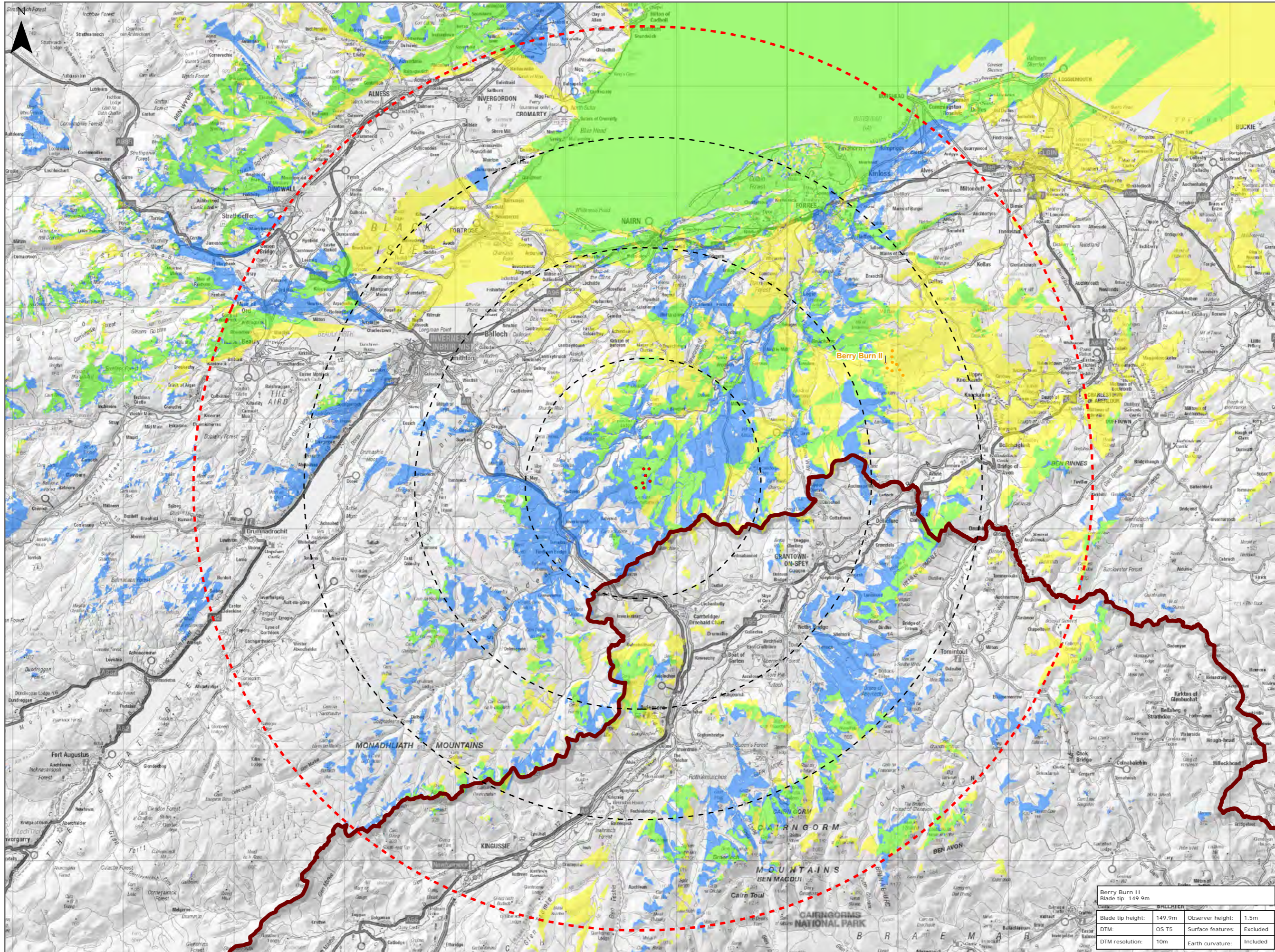


Figure 9.21 Cumulative ZTV with application Berry Burn II



Legend:

- Proposed Turbine
- 10km Radii
- 40km LVIA Study Area
- ▭ Cairngorms National Park

Wind Farm Status

- Appeal: Application

Cumulative ZTV

- Tom na Clach Extension Theoretical Visibility
- Berry Burn II Theoretical Visibility
- Combined Theoretical Visibility

Title:  
Cumulative ZTV with application Berry Burn II

Tom na Clach Wind Farm Extension

Source: Contains OS data © Crown copyright and database right (2021). © Crown copyright. All rights reserved (2021). Ordnance Survey Licence 0100031673. Contains public sector information licensed under the Open Government Licence v3.0

Client: Infinergy

Drawn by:	Checked:
JM	JP

Date:	Figure:
03/01/2022	9.21

Scale:	Revision No:
0 2.5 5 km	1

Berry Burn II Blade tip: 149.9m			
Blade tip height:	149.9m	Observer height:	1.5m
DTM:	OS T5	Surface features:	Excluded
DTM resolution:	10m	Earth curvature:	Included