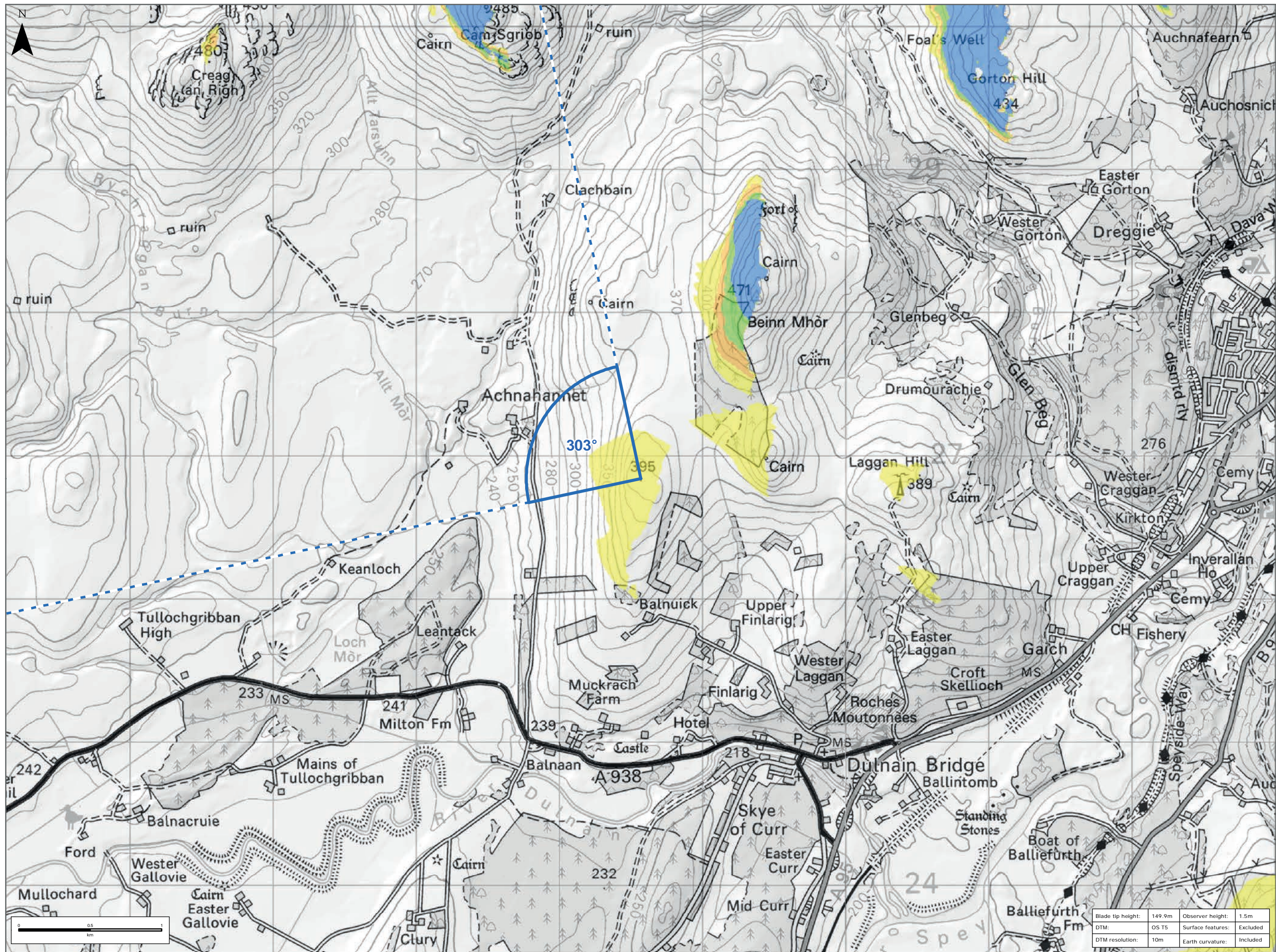
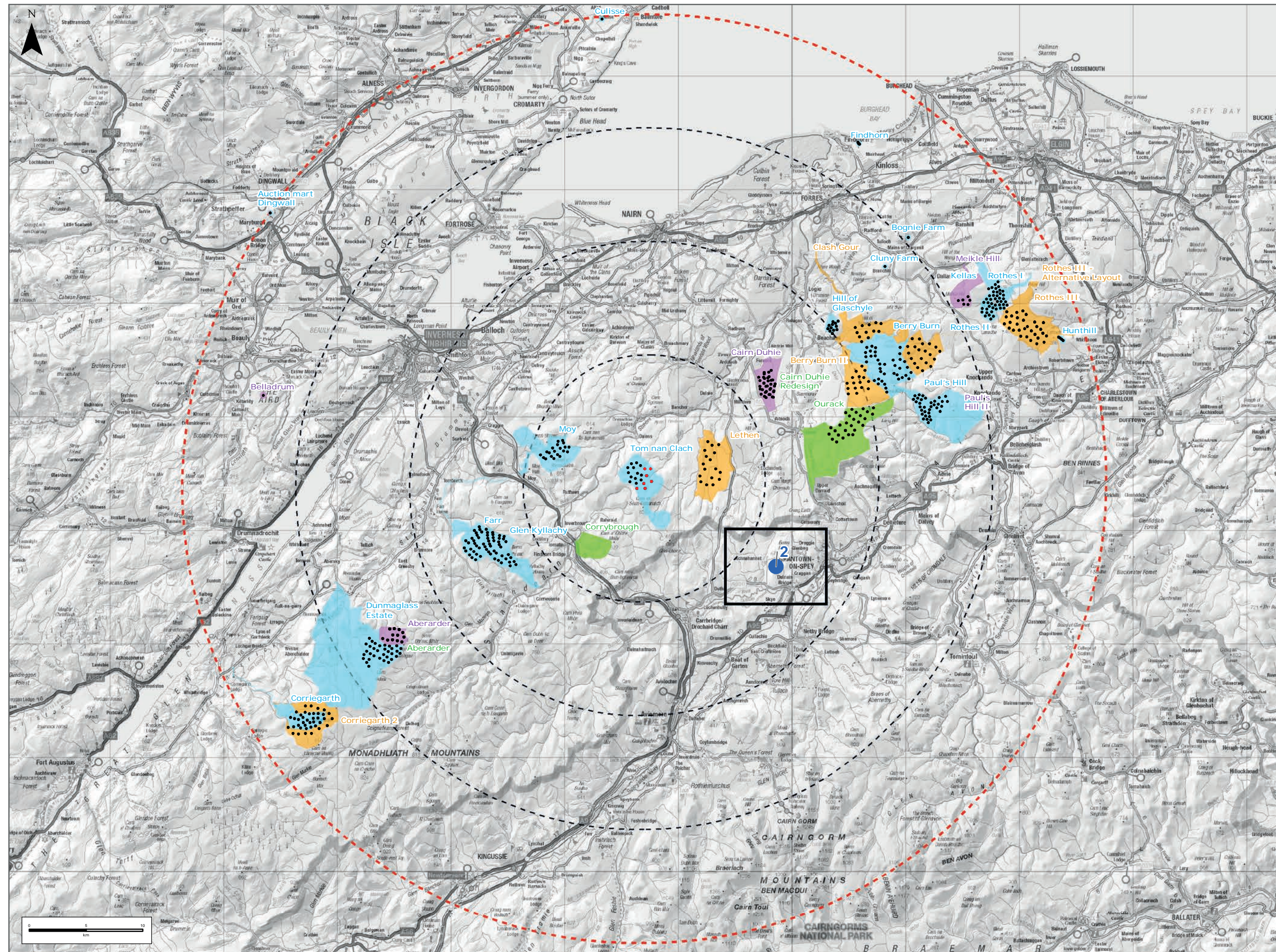


Figure 9.59a - Viewpoint 2: Hill to west of Granton on Spey



Legend:

- Proposed Turbine
- 10km Radii
- 40km LVIA Study Area

Wind Development Status:

- Operational / Under Construction
- Consented
- Application
- Scoping

Blade Tip ZTV

No. of Theoretically Visible Turbines

- 1 - 2
- 3 - 4
- 5 - 6
- 7

Wireline (90° HFOV)

Title: Viewpoint 2: Hill to west of Granton on Spey

Tom na Clach Wind Farm Extension

Source: © Crown copyright. All rights reserved (2021). Ordnance Survey Licence 0100011673. Contains OS data © Crown copyright and database right (2021).

Client: Infinergy

Drawn by: JM

Checked: JP

Date: 23/11/2021

Figure: 9.59a

Scale: N/A

Revision No: 1

INFINERGY

Blade tip height:	149.9m	Observer height:	1.5m
DTM:	OS 15	Surface features:	Excluded
DTM resolution:	10m	Earth curvature:	Included
Units:	metres		

