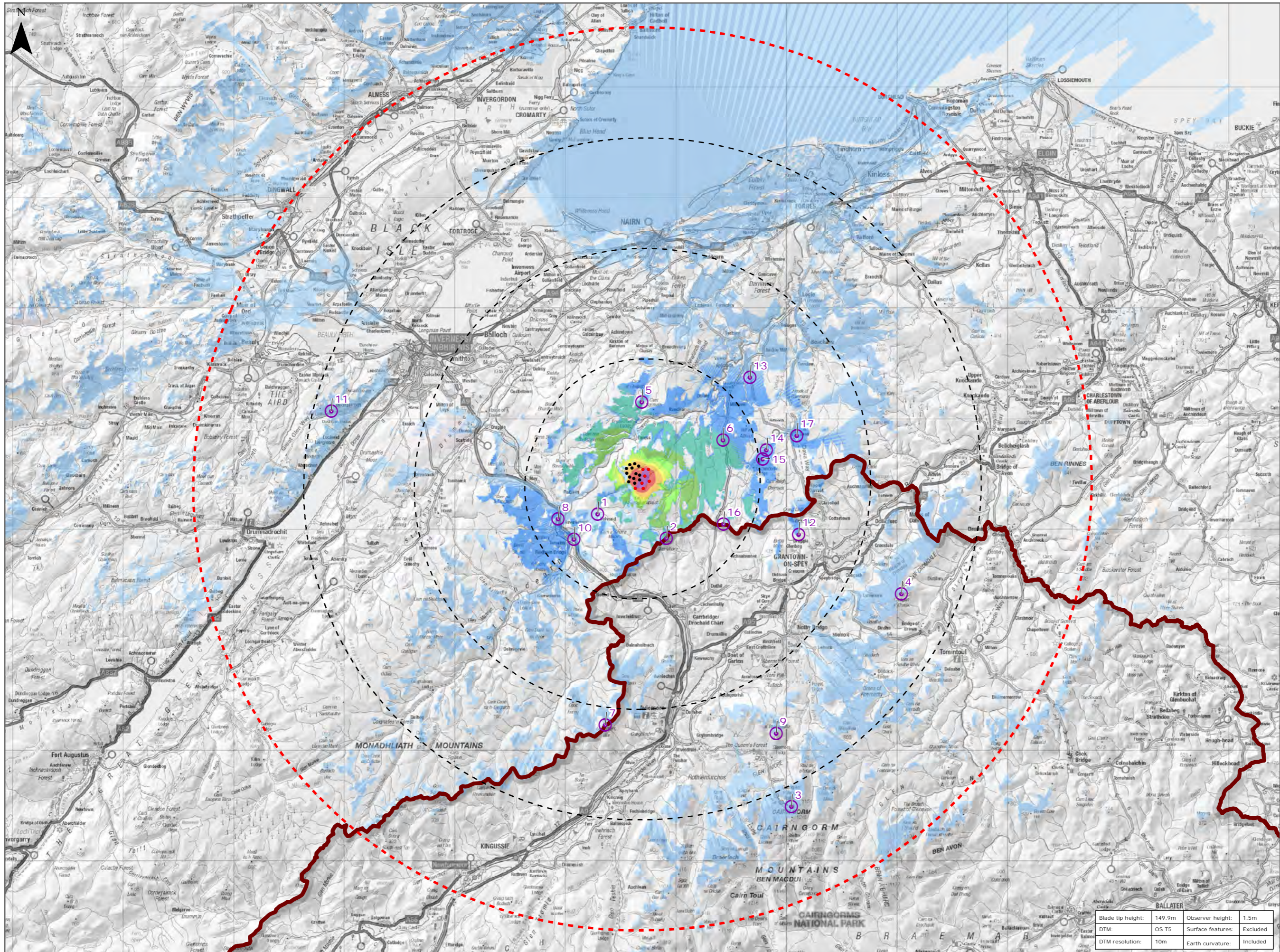


Figure 9.7 Horizontal Angle ZTV with viewpoints



- Legend:
- Operational Tom nan Clach Turbine
 - Proposed Turbine
 - 10km Radii
 - 40km LVIA Study Area
 - Cairngorms National Park
- Horizontal Angle Blade Tip ZTV *
Angle in Degrees
- 0 - 1
 - 1 - 5
 - 5 - 10
 - 10 - 20
 - 20 - 30
 - 30 - 40
 - 40 - 50
 - 50 - 60
 - 60 - 90
 - 90 - 180
 - 180 - 360
- Viewpoint Location

1. Balvaird Lodge
2. Carn Glas-Choire
3. Ptarmigan Lodge
4. Creagan a Chaise, Hills of Cromdale
5. Minor Road north of Drynachen
6. B9007 near Lochindorb
7. Geal Charn Mor, Monadhliath
8. A9 north of Tomatin Junction
9. Meall a Bhuachaille
10. A9 River Findhorn Bridge
11. Blackford, near Dochgarroch
12. Gorton Hill
13. A939 at Milestone
14. Shore Road Lochindorb 1
15. Shore Road Lochindorb 2
16. Creag Ealraich
17. Dava Way

* The horizontal angle ZTV measures how much of the horizontal field of view is occupied by the Development. It is calculated from grid of receptors in the study area and measures the maximum angle from the furthest left to the furthest right extent of the Development.

Title:		Horizontal Angle ZTV with Viewpoints	
		Tom na Clach Wind Farm Extension	
Source: Contains OS data © Crown copyright and database right (2021). © Crown copyright. All rights reserved (2021). Ordnance Survey Licence 0100031673			
Client:		Infinergy	
Drawn by:	Checked:	JM	JP
Date:	Figure:	03/01/2022	9.7
Scale:	Revision No:	0 2.5 5 km	1
Blade tip height:	149.9m	Observer height:	1.5m
DTM:	OS T5	Surface features:	Excluded
DTM resolution:	10m	Earth curvature:	Included