

**From:** Planning.North <Planning.North@sepa.org.uk>  
**Sent:** 25 April 2022 16:06  
**To:** Nick Sage  
**Cc:** Tom Na Clach Wind Farm; Mark.Ashton@gov.scot  
**Subject:** Tom na Clach Windfarm Extension - request for further information  
**Attachments:** Magilton, Margaret\_202204110949.pdf

OFFICIAL

Dear Nick

Thanks for the above letter letting us know that you have submitted of the Tom na Clach extension application. We've not received the formal consultation from ECU yet but I started looking at the info just now and hope that you can help with the following:

- Figure 11.2 shows the Phase 1 habitats with layout but we don't seem to have a figure showing the National Vegetation Classification habitats and layout – can you direct me, or provide one now?
- The Habitat Report Maps (Appendix 11A) doesn't show the location of the tracks and other supporting infrastructure such as the proposed substation – can these be added and then sent to me?

Many thanks

Susan Haslam  
Senior Planning Officer - Planning Service North  
Graesser House, Dingwall Business Park, Dingwall  
Email: [planning.north@sepa.org.uk](mailto:planning.north@sepa.org.uk)  
Mobile: 07713 053 767

Please note my working days are Monday to Thursday and Friday morning

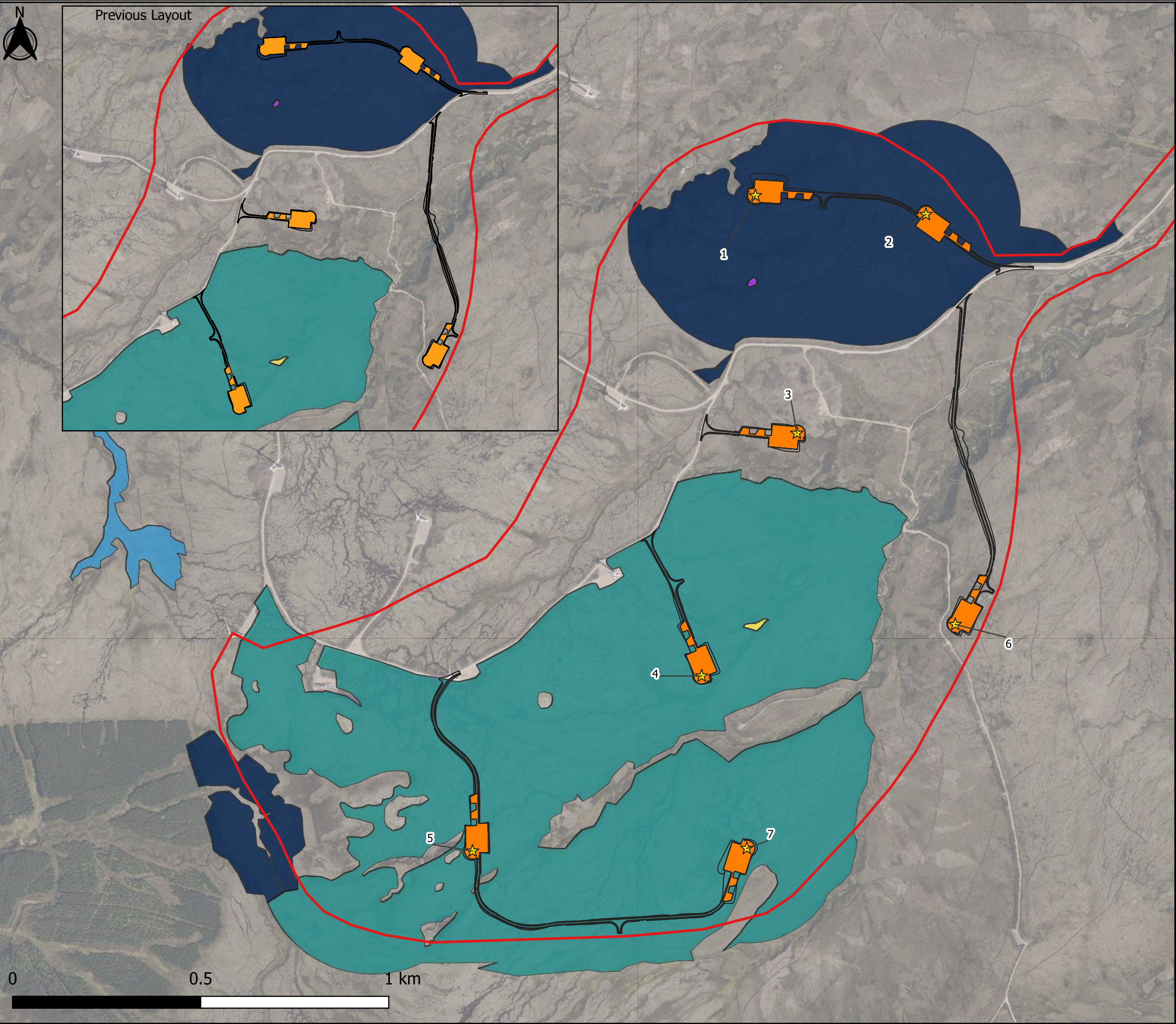
#### Disclaimer

The information contained in this email and any attachments may be confidential and is intended solely for the use of the intended recipients. Access, copying or re-use of the information in it by any other is not authorised. If you are not the intended recipient please notify us immediately by return email to [postmaster@sepa.org.uk](mailto:postmaster@sepa.org.uk). Registered office: Strathallan House, Castle Business Park, Stirling FK9 4TZ. Under the Regulation of Investigatory Powers Act 2000, the email system at SEPA may be subject to monitoring from time to time.

OFFICIAL



Figure 11.2 NVC Habitat Map - M18, M2 and M3



LEGEND

- Proposed Development Site Boundary
- TNCX Crane Pads
- Tracks and Infrastructure
- Proposed Turbine Locations

M18

M18 = 2

M2

M2 = 1

M2 = 2

M2 = 3

M2 and M3

M2 = 1, M3 = 1

NVC Legend Value	Proportion of polygon occupied by the habitat
1	Less than 1%
2	1 to 5%
3	5 to 10%
4	10 to 25%
5	25 to 50%
6	50 to 75%
7	75 to 95%
8	95 to 100%

Title

NVC Habitat Map - M18, M2 and M3

Project

Tom na Clach - Additional Information

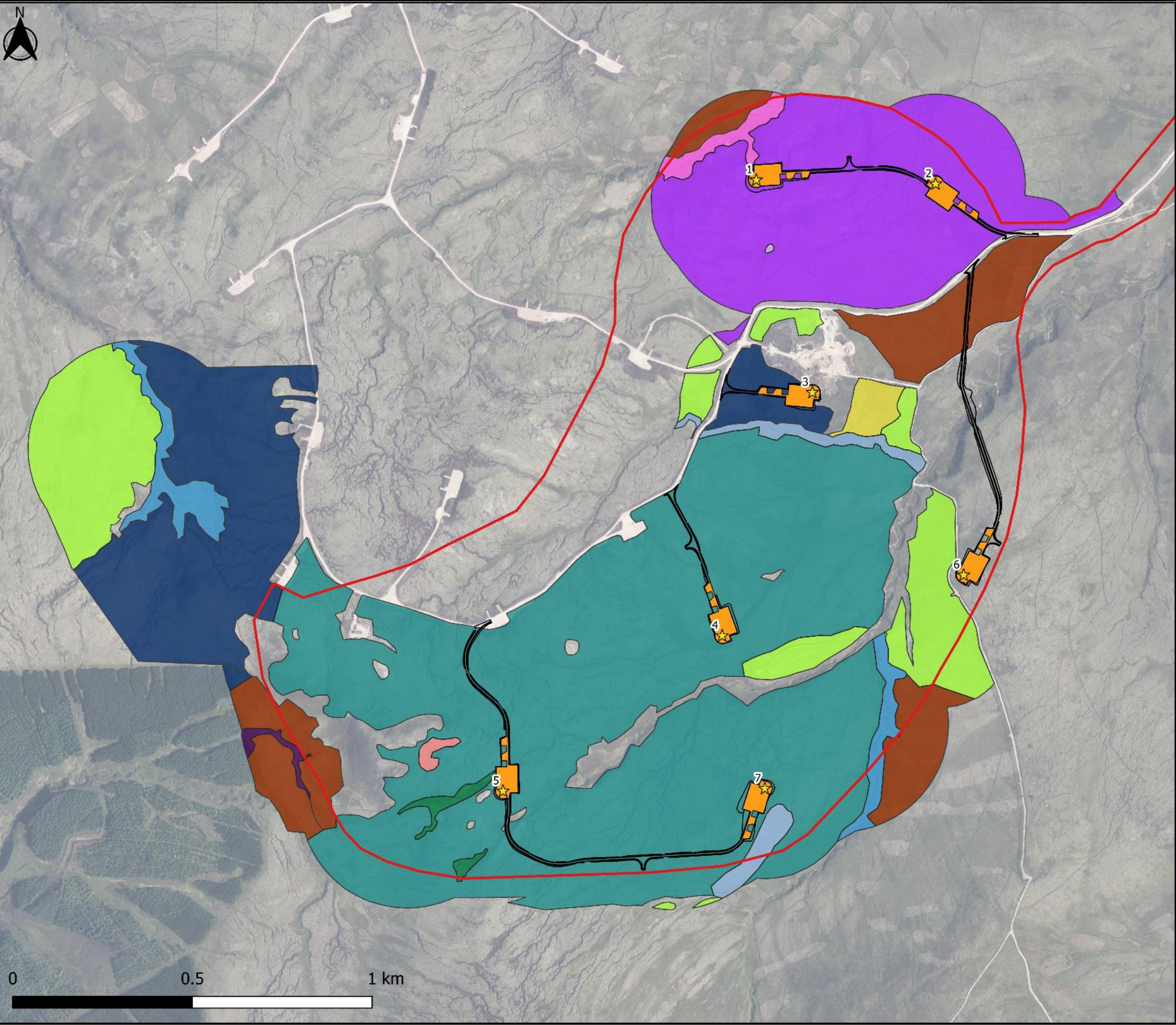
Sources

BSG Ecology | Aerial Photography © Bing. Microsoft Bing Maps screen shot reprinted with permission from Microsoft Corporation.

Date	Page - Scale	Drawn
23/11/2022	1:10,500	SL



Figure 11.7 NVC Habitat Map - M19



LEGEND

- Proposed Development Site Boundary
- Proposed Turbine Locations
- Access Track and Earthworks
- Crane Pads
- M19 = 3
- M19 = 4
- M19 = 8
- M19a/b = 2
- M19a/b = 3
- M19a/b = 4
- M19a/b = 5
- M19a/b = 8
- M19c = 6
- M19c = 8
- M19a/b = 4, M19c = 6
- M19a/b = 4, M19c = 7
- M19a/b = 7, M19c = 4

NVC Legend Value	Proportion of polygon occupied by the habitat
1	Less than 1%
2	1 to 5%
3	5 to 10%
4	10 to 25%
5	25 to 50%
6	50 to 75%
7	75 to 95%
8	95 to 100%

Title

NVC Habitat Map

Project

Tom na Clach

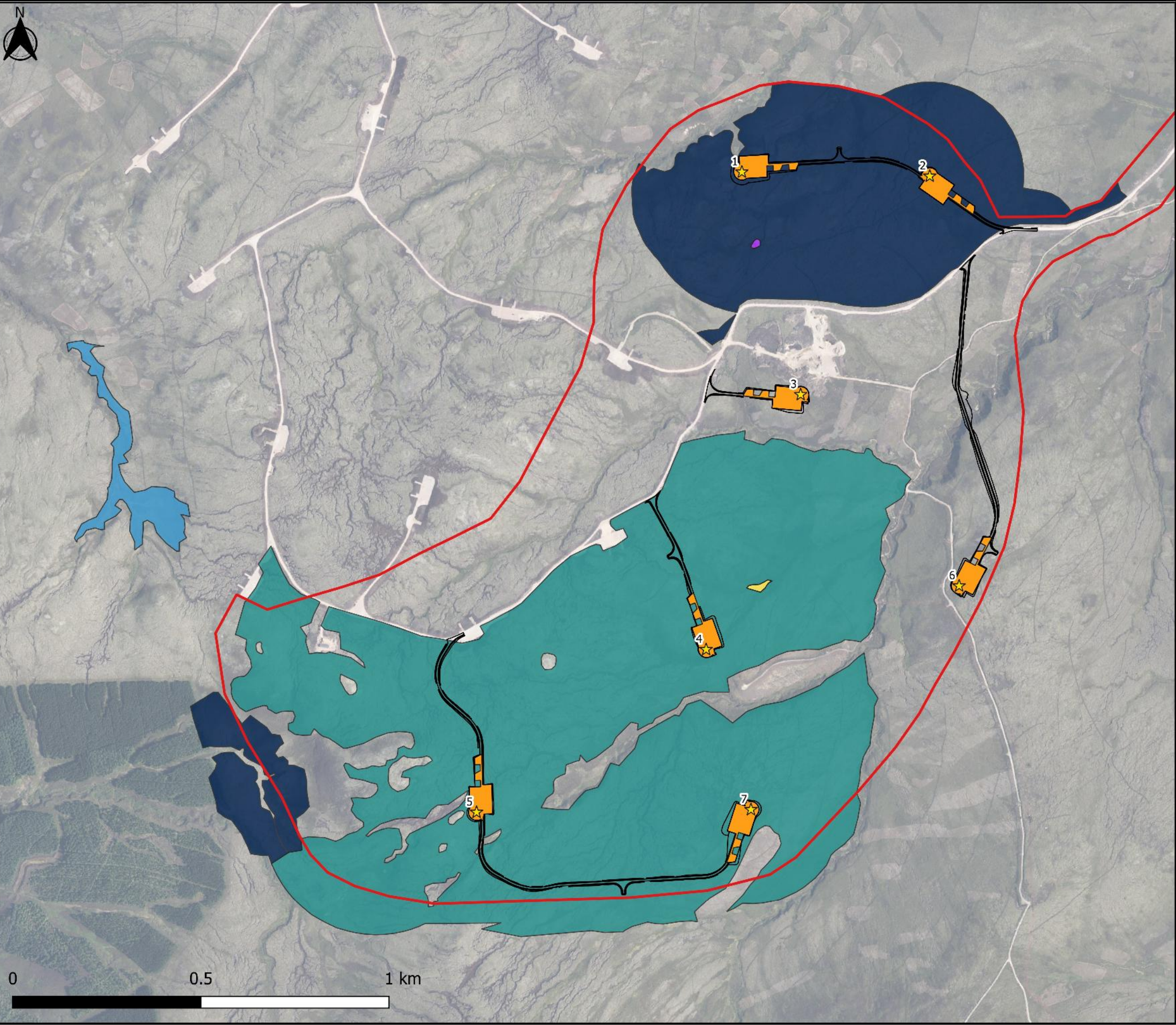
Sources

BSG Ecology | Aerial Photography © Bing, Microsoft Bing Maps screen shot reprinted with permission from Microsoft Corporation.

Date	Page - Scale	Drawn
28/04/2022	1:11,000	SL



Figure 11.8 NVC Habitat Map - M18, M2 and M3



LEGEND

- Proposed Development Site Boundary
- Proposed Turbine Locations
- Access Track and Earthworks
- Crane Pads
- M18 = 2
- M2 = 1
- M2 = 2
- M2 = 3
- M2 = 1, M3 = 1

NVC Legend Value	Proportion of polygon occupied by the habitat
1	Less than 1%
2	1 to 5%
3	5 to 10%
4	10 to 25%
5	25 to 50%
6	50 to 75%
7	75 to 95%
8	95 to 100%

Title  
NVC Habitat Map

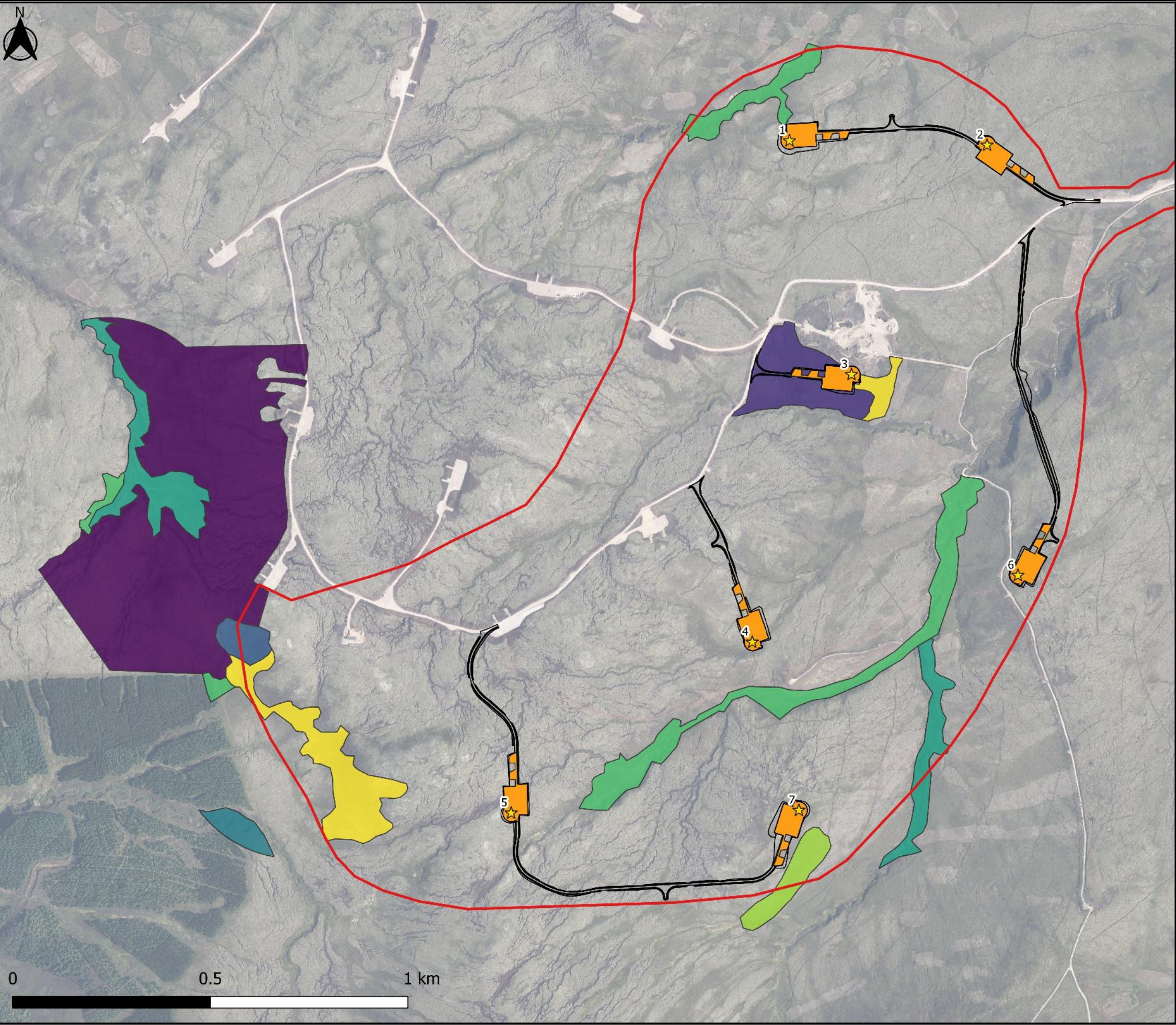
Project  
Tom na Clach

Sources  
BSG Ecology | Aerial Photography © Bing, Microsoft Bing Maps screen shot reprinted with permission from Microsoft Corporation.

Date	Page - Scale	Drawn
28/04/2022	1:10,500	SL



Figure 11.9 NVC Habitat Map - H12



LEGEND

- Proposed Development Site Boundary
- Proposed Turbine Locations
- Access Track and Earthworks
- Crane Pads
- H12 = 1
- H12 = 2
- H12 = 3
- H12 = 4
- H12 = 5
- H12 = 6
- H12 = 7
- H12 = 8

NVC Legend Value	Proportion of polygon occupied by the habitat
1	Less than 1%
2	1 to 5%
3	5 to 10%
4	10 to 25%
5	25 to 50%
6	50 to 75%
7	75 to 95%
8	95 to 100%

Title  
NVC Habitat Map

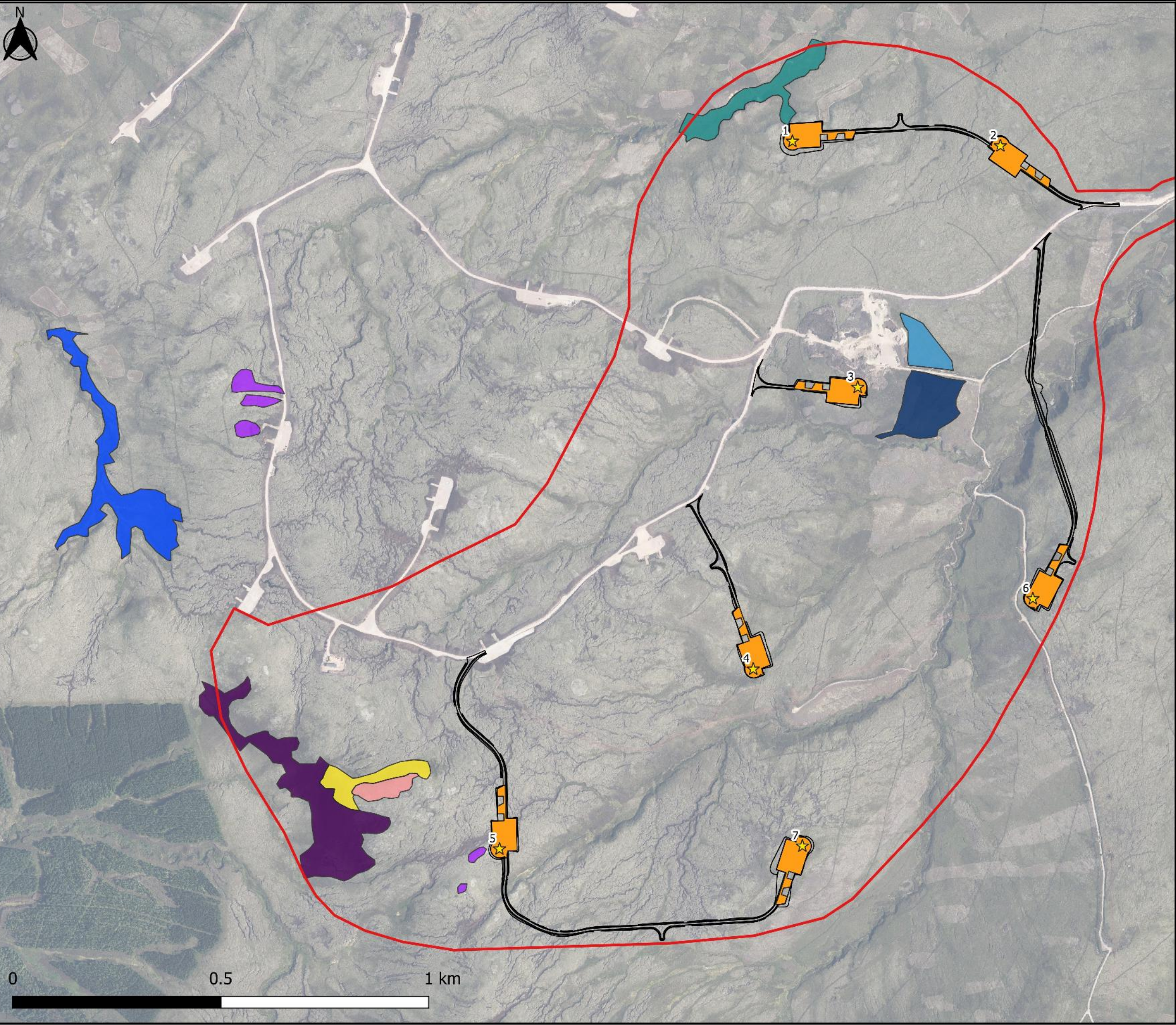
Project  
Tom na Clach

Sources  
BSG Ecology | Aerial Photography © Bing, Microsoft Bing Maps screen shot reprinted with permission from Microsoft Corporation.

Date	Page - Scale	Drawn
28/04/2022	1:10,000	SL



Figure 11.10 NVC Habitat Map - H9, H16, H21a, H22



LEGEND

- Proposed Development Site Boundary
- Proposed Turbine Locations
- Access Track and Earthworks
- Crane Pads
- H9 = 6
- H9 = 8
- H16 = 8
- H13 = 5, H16 = 6
- H21a = 2
- H21a = 3
- H22 = 2
- H22 = 7

NVC Legend Value	Proportion of polygon occupied by the habitat
1	Less than 1%
2	1 to 5%
3	5 to 10%
4	10 to 25%
5	25 to 50%
6	50 to 75%
7	75 to 95%
8	95 to 100%

Title

NVC Habitat Map

Project

Tom na Clach

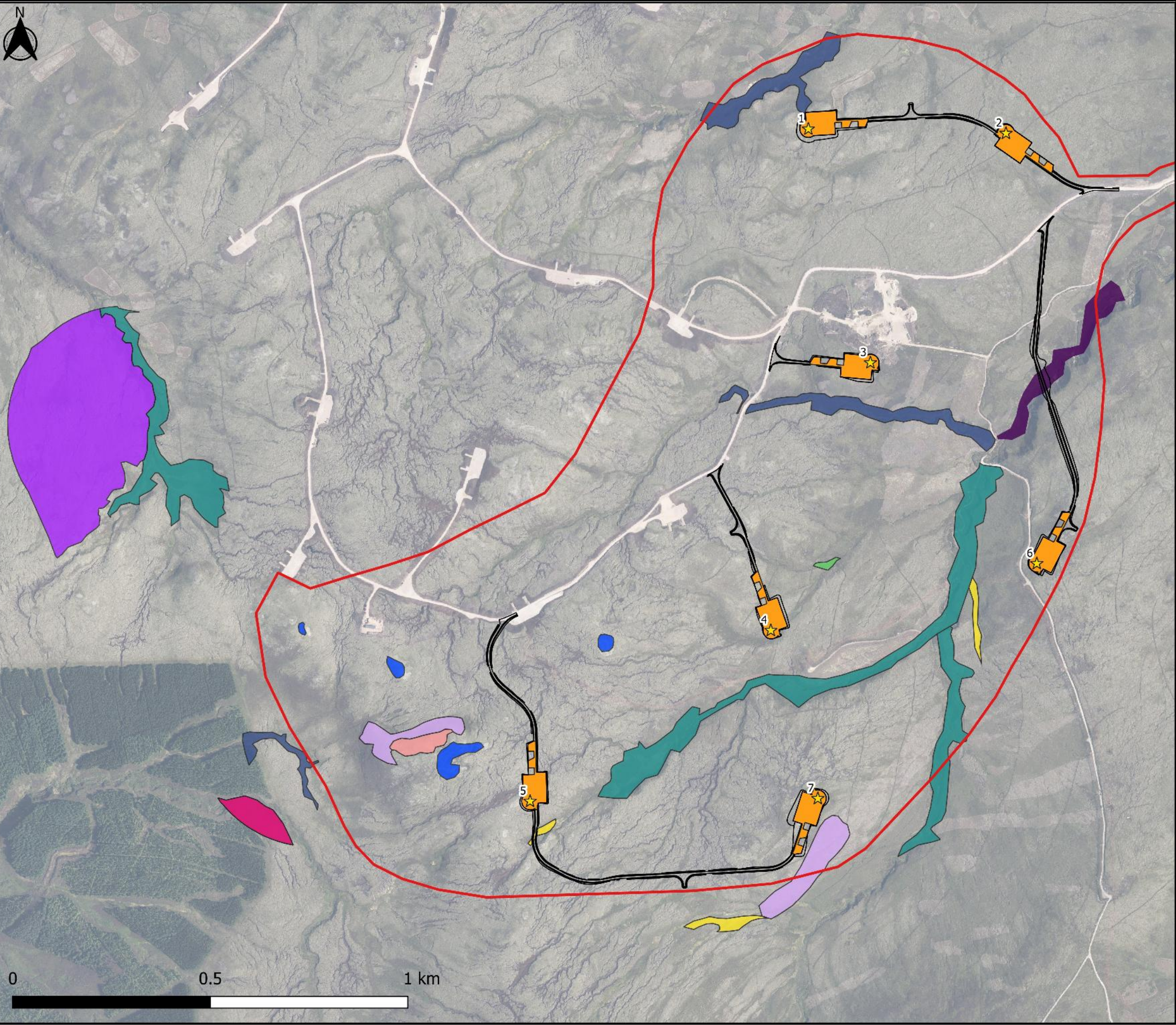
Sources

BSG Ecology | Aerial Photography © Bing, Microsoft Bing Maps screen shot reprinted with permission from Microsoft Corporation.

Date	Page - Scale	Drawn
28/04/2022	1:9,500	SL



Figure 11.11 NVC Habitat Map - H13, M6c, W19b



LEGEND

- Proposed Development Site Boundary
- Proposed Turbine Locations
- Access Track and Earthworks
- Crane Pads
- H13 = 1
- H13 = 4
- H13 = 5
- H13 = 8
- M6c = 2
- M6c = 4
- M6c = 5
- M6c = 7
- M6c = 8
- W19b = 3

NVC Legend Value	Proportion of polygon occupied by the habitat
1	Less than 1%
2	1 to 5%
3	5 to 10%
4	10 to 25%
5	25 to 50%
6	50 to 75%
7	75 to 95%
8	95 to 100%

Title  
NVC Habitat Map

Project  
Tom na Clach

Sources  
BSG Ecology | Aerial Photography © Bing, Microsoft Bing Maps screen shot reprinted with permission from Microsoft Corporation.

Date	Page - Scale	Drawn
28/04/2022	1:10,000	SL