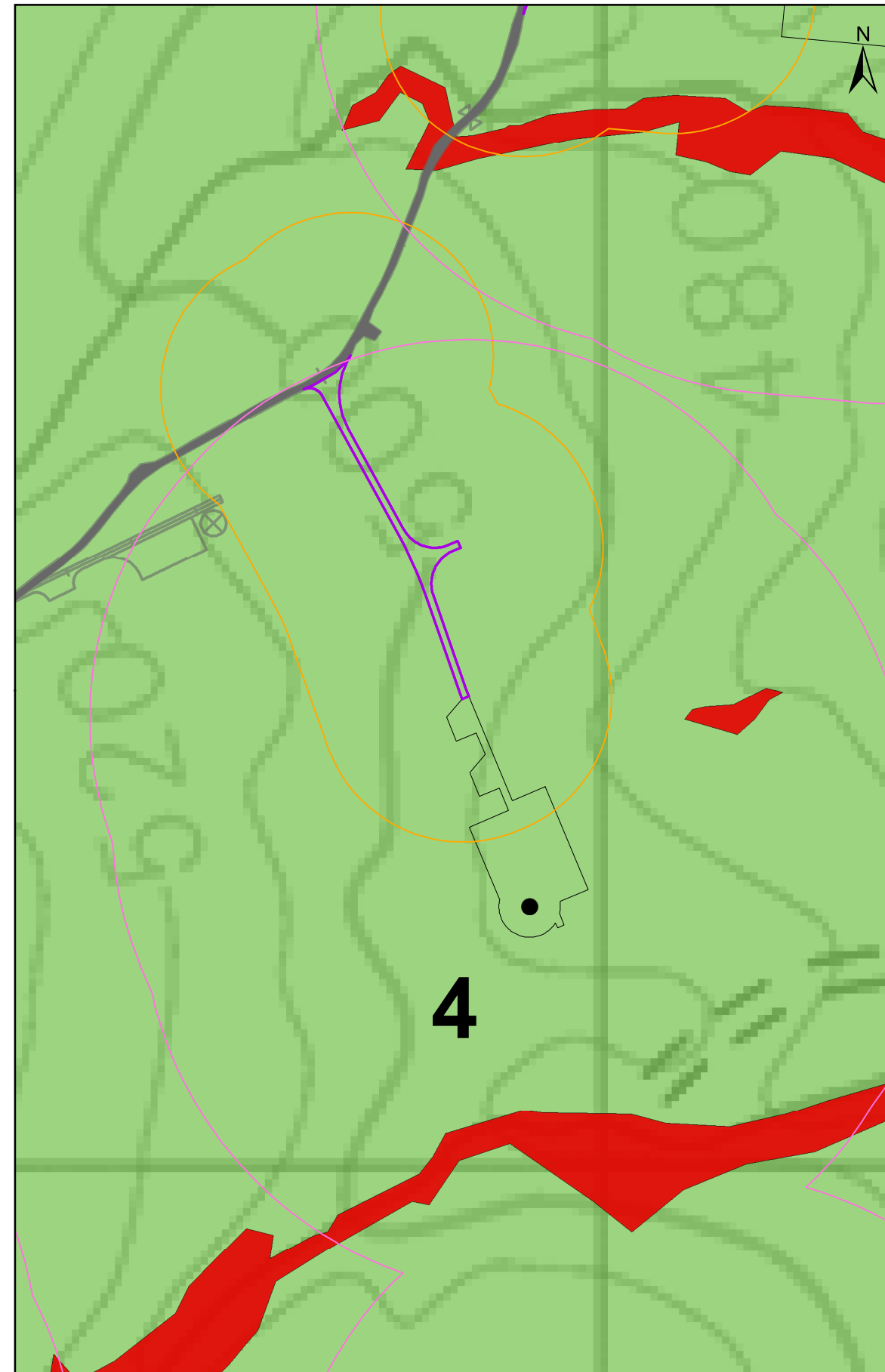


Previous T4 location with High GWDTE locations



New T4 location with High GWDTE locations

<p>Site Boundary</p> <p>● Turbine Locations</p> <p>□ TNC Extension Layout</p> <p>□ Floating Track</p> <p>— Existing TNC Layout</p> <p>○ Buffer 100m</p> <p>○ Buffer 250m</p>	
<p>Hydrogeology</p> <p>Aquifers in which flow is virtually all through fractures and other discontinuities</p> <p>■ Low productivity aquifer</p>	
<p>Potential GWDTE Based on the Hydrogeological Regime</p> <p>■ High</p>	
<p>Title:</p> <p>Potential GWDTE Based on the Hydrogeological Regime Turbine T4</p>	
<p>Project:</p> <p>Tom na Clach Wind Farm Extension</p>	
<p>Source:</p> <p>© Crown copyright and database rights 2022 Ordnance Survey 0100031673</p> <p>© UKRI [2022]. Reproduced with the permission of the British Geological Survey. All rights Reserved.</p>	
<p>Client:</p> <p>INFINERGY LTD</p>	
<p>Drawn by:</p> <p>JM</p>	<p>Checked:</p> <p>DS</p>
<p>Date:</p> <p>23/11/2022</p>	<p>Figure:</p> <p>13.8</p>
<p>Scale:</p> <p>0 25 50 75 100 meters</p>	<p>Scale:</p> <p>1:4,000 @ A3</p>
<p>INFINERGY</p> <p>FLUID ENVIRONMENTAL CONSULTING</p>	